

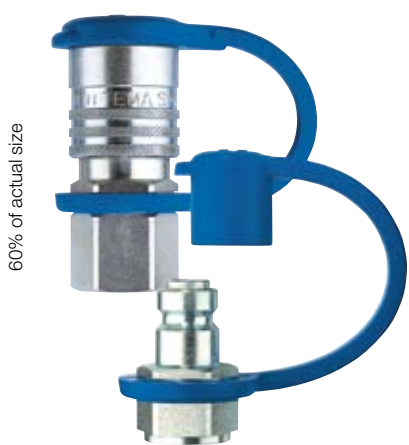


Nominal Diameter

2.5 = 6.25 mm²

TEMA Series

THP1000



60% of actual size

Technical Description

The Tema high pressure coupling was specially developed for use in industrial machinery, salvage devices and testing equipment. This series is galvanised and produced in steel. The plug part and the sleeve are hardened and galvanised in steel. The coupling can be supplied either with or without additional safety lock.

Advantages

High flow as a result of optimised valve design. Additional plug sealing via polymer valve casing, to guarantee high reliability seals even with second-hand plugs. Tema high pressure couplings are supplied with dust caps inclusive!

Seals

Coupling:
bonded seal washer

Plug:
bonded seal or innercone (Bonded steel washer s. page 467)

Interchangeability

CEJN 115

Working Pressure

1000 bar

Working Temperature

-30°C up to +100°C (NBR)

Available Valves



Material

Coupling

- Coupling Body
- Sleeve
- Valve
- Springs
- Locking Balls
- Seals
- Inner Sleeve

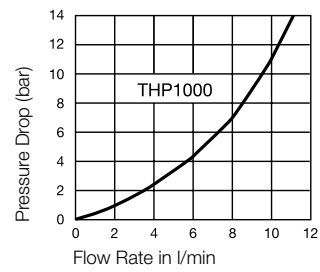
- Steel, Zinc Plated, passivated, sealed
- Steel, Hardened, Zinc Plated, passivated, sealed
- Steel, Zinc Plated, passivated, sealed
- AISI 301
- AISI 420 C
- NBR
- POM

Plug

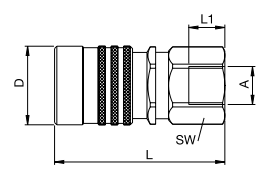
- Plug Body
- Valve
- Springs
- Seals
- Valve Holder

- Steel, Hardened, Zinc Plated, passivated, sealed
- Steel, Zinc Plated, passivated, sealed
- AISI 301
- NBR
- Steel, Galvanised

Flow Capacity Viscosity for 37cSt at 40°C as per ISO 7241/2-2000



Couplings TEMA Series THP1000



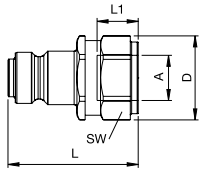
Female Thread

Connection A	Hex SW	L mm	L1 mm	D mm	Safety Locking	Working press. coupled in bar	Working press. uncoupled in bar	Bursting Press. coup. in bar	Part Number	DS
G 1/4	24	59	12	27	without	1000	1000	>3000	THP10104131	■
G 1/4	24	59	12	27	with	1000	1000	>3000	THP10104132	■
1/4-18 NPTF	24	59	12	27	without	1000	1000	>3000	THP10105131	□
1/4-18 NPTF	24	59	12	27	with	1000	1000	>3000	THP10105132	□
G 3/8	24	59	12	27	without	1000	1000	>3000	THP10104171	■
G 3/8	24	59	12	27	with	1000	1000	>3000	THP10104172	□
3/8-18 NPTF	24	59	13	27	without	1000	1000	>3000	THP10105171	□
3/8-18NPTF	24	59	13	27	with	1000	1000	>3000	THP10105172	□

DS = Delivery Status: ■ in stock □ on short call □ medium term delivery

Plugs

TEMA Series THP1000

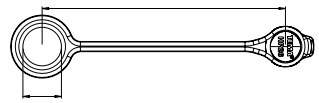
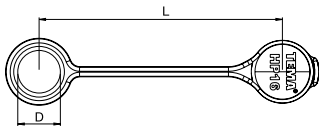


Female Thread

Connection A	Hex SW	L mm	L1 mm	D mm	Working press. coupled in bar	Working press. uncoupled in bar	Bursting press. coupled in bar	Part Number	DS
G 1/4	22	37	12	24,5	1000	1000	>3000	THP1020413	■
1/4-18 NPTF	22	37	12	24,5	1000	1000	>3000	THP1020513	□
G 3/8	24	37	12	24,5	1000	1000	>3000	THP1020417	■
3/8-18 NPTF	24	37	13	24,5	1000	1000	>3000	THP1020517	□

Dust Protection

TEMA Series THP1000



Description	L mm	D mm	Colour	Material	Part Number	DS
Coupling	120	21	Blue	PVC	THP16	□
Coupling	125	-	Red	Aluminium	THP16ARD	■
Plug	120	19	Blue	PVC	THP26	□
Plug	140	-	Red	Aluminium	THP26ARD	■



Nominal Diameter

2.5 = 6.25 mm²

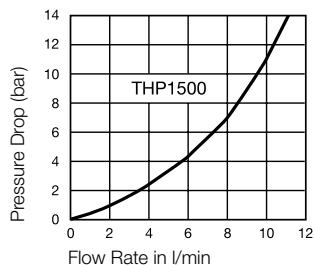
TEMA Series

THP1500



auf 60% verkleinert

Flow Capacity Viscosity for 37cSt at 40°C as per ISO 7241/2-2000



Technical Description

The Tema high pressure coupling was specially developed for use in bolt tensioning equipment. This series is produced in steel. The coupling body is nitro-carburised. The plug bodies and the sleeves are black galvanised. The coupling can be supplied either with or without additional safety lock.

Advantages

High flow as a result of optimised valve design. Additional plug sealing via polymer valve casing, to guarantee high reliability seals even with second-hand plugs. Tema high pressure couplings are supplied with dust caps inclusive!

Seals

Metal sealing cone threaded adapters/metal sealing cone adapters.

Interchangeability

CEJN 116

Working Pressure

1500 bar

Working Temperature

-30°C up to +100°C (NBR)

Available Valves



Material

Coupling

Coupling Body
Sleeve
Valve
Springs
Locking Balls
Seals
Inner Sleeve

Steel, nitrocarburised, Zinc-iron coated, black passivated, sealed
Steel, Hardened, Zinc-iron coated, black passivated, sealed
Steel, Zinc-Plated, passivated, sealed
AISI 301
AISI 420 C
NBR
POM

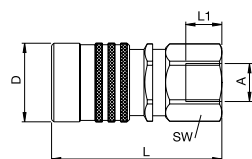
Plug

Plug Body
Valve
Springs
Seals
Valve Holder

Steel, Hardened, Zinc-iron coated, black passivated, sealed
Steel, Zinc-Plated, passivated, sealed
AISI 301
NBR
Steel, Galvanised

Couplings

TEMA Series THP1500



Female Thread

Connection A	Hex SW	L mm	L1 mm	D mm	Safety Locking	Working press. coupled in bar	Working press. uncoupled in bar	Bursting press. coup. in bar	Part Number	DS
G 1/4	24	59	12	27	without	1500	1500	>3500	THP15104131	■
G 1/4	24	59	12	27	with	1500	1500	>3500	THP15104132	■□
1/4-18 NPTF	24	59	12	27	without	1500	1500	>3500	THP15105131	■□
1/4-18 NPTF	24	59	12	27	with	1500	1500	>3500	THP15105132	■□
G 3/8	24	59	12	27	without	1500	1500	>3500	THP15104171	■□
G 3/8	24	59	12	27	with	1500	1500	>3500	THP15104172	■□
3/8-18 NPTF	24	59	13	27	without	1500	1500	>3500	THP15105171	■□
3/8-18 NPTF	24	59	13	27	with	1500	1500	>3500	THP15105172	■□

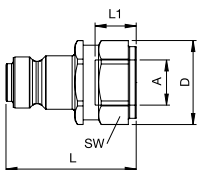
DS = Delivery Status: ■ in stock

■□ on short call

□ medium term delivery

Plugs

TEMA Series THP1500

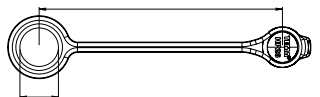
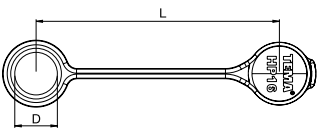


Female Thread

Connection A	Hex SW	L mm	L1 mm	D mm	Working press. coupled in bar	Working press. uncoupled in bar	Bursting Press. coupled in bar	Part Number	DS
G 1/4	22	38	12	24,5	1500	1500	>3500	THP1520413	■
1/4-18 NPTF	22	38	12	24,5	1500	1500	>3500	THP1520513	■

Dust Protection

TEMA Series THP1500



Description	L mm	D mm	Color	Material	Part Number	DS
Coupling	120	21	Blue	PVC	THP16	■
Coupling	125	-	Red	Aluminium	THP16ARD	■
Plug	120	19	Blue	PVC	THP26	■
Plug	140	-	Red	Aluminium	THP26ARD	■