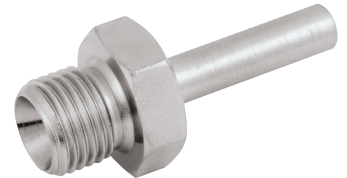
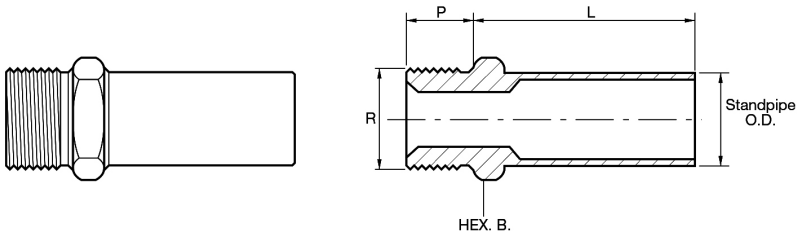


Hydraulic Imperial Compression Fittings



Stud Standpipe Adaptors for O.D. & N.B. Fittings



| O.D. Tubes | | | | | |
|-------------|---------------|-------------------|-----------------|-------|---------|
| Part Number | BSP Thread R. | O.D. of Standpipe | Body Hexagon B. | P. | L. |
| 2018-9809 | 1/4" | 1/4" | .710" | 7/16" | 11/4" |
| 2018-9817 | 1/4" | 5/16" | .710" | 7/16" | 19/32" |
| 2018-9825 | 1/4" | 3/8" | .710" | 7/16" | 15/16" |
| 2018-9833 | 3/8" | 3/8" | .920" | 1/2" | 13/8" |
| 2018-9841 | 3/8" | 1/2" | .920" | 1/2" | 17/16" |
| 2018-9858 | 1/2" | 5/8" | 1.10" | 5/8" | 19/16" |
| 2018-9866 | 3/4" | 3/4" | 1.30" | 3/4" | 13/4" |
| 2018-9874 | 3/4" | 1" | 1.30" | 3/4" | 115/16" |
| 2018-9882 | 1" | 1" | 1.67" | 7/8" | 2" |
| 2018-9890 | 1.1/4" | 1.1/2" | 2.05" | 1" | 25/16" |

| N.B. Tubes | | | | | |
|-------------|---------------|-------------------|-----------------|-------|----------|
| Part Number | BSP Thread R. | O.D. of Standpipe | Body Hexagon B. | P. | L. |
| 2018-9932 | 1/4" | 1/4" | .710" | 7/16" | 1.7/16" |
| 2018-9932 | 3/8" | 1/4" | .920" | 1/2" | 1.1/2" |
| 2018-9940 | 3/8" | 3/8" | .920" | 1/2" | 1.1/2" |
| 2018-9965 | 1/2" | 3/8" | 1.10" | 5/8" | 1.9/16" |
| 2018-9973 | 1/2" | 1/2" | 1.10" | 5/8" | 1.11/16" |
| 2108-9999 | 3/4" | 1/2" | 1.30" | 3/4" | 1.13/16" |
| 2019-0005 | 3/4" | 3/4" | 1.30" | 3/4" | 2.1/16" |
| 2019-0039 | 3/4" | 1" | 1.375" | 3/4" | 2.332" |
| 2019-0062 | 1" | 1" | 1.67" | 7/8" | 25/32" |
| 2019-0070 | 1" | 1 1/4" | 1.86" | 7/8" | 2.1332" |
| 2019-0088 | 1.1/4" | 1" | 2.05" | 1" | 2.732" |
| 2019-0096 | 1.1/4" | 1.1/4" | 2.05" | 1" | 2.1332" |

NOTE: THE BSP THREADS ARE COUNTERSUNK 60°, SUITABLE FOR HOSE CONNECTION.

Alternatively supplied fitted with nut and ferrule, at extra cost, on standpipe end.