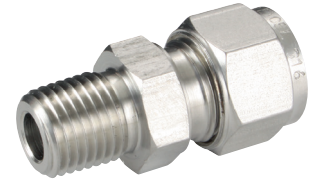
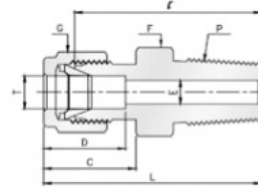


316 Stainless Steel Twin Ferrule Metric Tube Fittings



Male Connectors

Male Thread-RP, BSPP



PART NO	T mm	P (BSPT)	E mm	F	G	D	C	I	L
MC-3-125RT	3	1/8	2.4	12	12	12.9	15.3	23.1	29.7
MC-3-250RT	3	1/4	2.4	14	12	12.9	15.3	29.0	35.6
MC-4-125RT	4	1/8	2.4	12	12	13.7	16.1	24.6	31.2
MC-6-125RT	6	1/8	4.8	14	14	15.3	17.7	25.4	32.8
MC-6-250RT	6	1/4	4.8	14	14	15.3	17.7	30.2	37.6
MC-6-375RT	6	3/8	4.8	17	14	15.3	17.7	31.0	38.4
MC-6-500RT	6	1/2	4.8	22	14	15.3	17.7	36.6	44.0
MC-8-125RT	8	1/8	4.8	15	16	16.2	18.6	26.7	34.2
MC-8-250RT	8	1/4	6.4	15	16	16.2	18.6	31.2	38.7
MC-8-375RT	8	3/8	6.4	17	16	16.2	18.6	31.8	39.2
MC-8-500RT	8	1/2	6.4	22	16	16.2	18.6	37.3	44.8
MC-10-250RT	10	1/4	7.1	18	19	17.2	19.5	33.3	40.9
MC-10-375RT	10	3/8	7.9	18	19	17.2	19.5	33.3	40.9
MC-10-500RT	10	1/2	7.9	22	19	17.2	19.5	38.1	45.7
MC-12-250RT	12	1/4	7.1	22	22	22.8	22.0	33.3	43.4
MC-12-375RT	12	3/8	9.5	22	22	22.8	22.0	33.3	43.4
MC-12-500RT	12	1/2	9.5	22	22	22.8	2.0	38.1	48.2
MC-12-750RT	12	3/4	9.5	27	22	22.8	22.0	38.9	49.0
MC-15-500RT	15	1/2	11.9	24	25	24.4	22.0	38.9	49.0
MC-16-250RT	16	1/4	7.1	24	25	24.4	22.0	34.0	44.1
MC-16-375RT	16	3/8	9.5	24	25	24.4	22.0	34.0	44.1
MC-16-500RT	16	1/2	11.9	24	25	24.4	22.0	38.9	49.0
MC-16-750RT	16	3/4	12.7	27	25	24.4	22.0	38.9	49.0
MC-18-500RT	18	1/2	11.9	27	30	24.4	22.0	40.4	50.5
MC-18-750RT	18	3/4	15.1	27	30	24.4	22.0	40.4	50.5
MC-20-500RT	20	1/2	11.9	30	32	26.0	22.0	42.2	52.3
MC-20-750RT	20	3/4	15.9	30	32	26.0	22.0	42.2	52.3
MC-22-750RT	22	3/4	15.9	30	32	26.0	22.0	42.2	52.3
MC-22-1000RT	22	1	18.3	35	32	26.0	22.0	47.8	57.9
MC-25-750RT	25	3/4	15.9	35	38	31.3	26.5	45.2	57.5
MC-25-1000RT	25	1	21.8	35	38	31.3	26.5	50.0	62.3