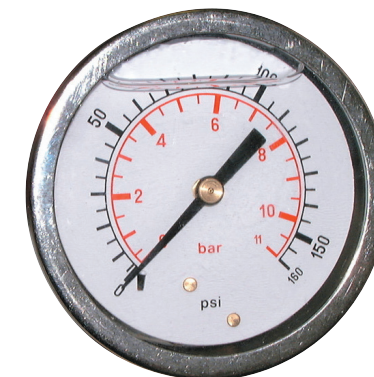


Glycerine Gauges



Stainless Steel Case, Centre Back Connection



PART NO	TYPE	CASE DIA.	CASE	WINDOW	MOVEMENT	BOURDON TUBE	CONNECTION	ENTRY	RANGE	OPERTATING TEMP.	ACCURACY
PG63-001RG	Gly-filled	63mm	Polished s/s 304	Polycarbonate	Brass	Phosphor Bronze	Brass	CBM BSPP 1/4"	0-1 bar / psi	Ambient 0-60°C	2.50%
PG63-002RG	Gly-filled	63mm	Polished s/s 304	Polycarbonate	Brass	Phosphor Bronze	Brass	CBM BSPP 1/4"	0-2 bar / psi	Ambient 0-60°C	2.50%
PG63-004RG	Gly-filled	63mm	Polished s/s 304	Polycarbonate	Brass	Phosphor Bronze	Brass	CBM BSPP 1/4"	0-4 bar / psi	Ambient 0-60°C	2.50%
PG63-006RG	Gly-filled	63mm	Polished s/s 304	Polycarbonate	Brass	Phosphor Bronze	Brass	CBM BSPP 1/4"	0-6 bar / psi	Ambient 0-60°C	2.50%
PG63-012RG	Gly-filled	63mm	Polished s/s 304	Polycarbonate	Brass	Phosphor Bronze	Brass	CBM BSPP 1/4"	0-12 bar / psi	Ambient 0-60°C	2.50%
PG63-020RG	Gly-filled	63mm	Polished s/s 304	Polycarbonate	Brass	Phosphor Bronze	Brass	CBM BSPP 1/4"	0-20 bar / psi	Ambient 0-60°C	2.50%
PG63-025RG	Gly-filled	63mm	Polished s/s 304	Polycarbonate	Brass	Phosphor Bronze	Brass	CBM BSPP 1/4"	0-25 bar / psi	Ambient 0-60°C	2.50%
PG63-040RG	Gly-filled	63mm	Polished s/s 304	Polycarbonate	Brass	Phosphor Bronze	Brass	CBM BSPP 1/4"	0-40 bar / psi	Ambient 0-60°C	2.50%
PG63-060RG	Gly-filled	63mm	Polished s/s 304	Polycarbonate	Brass	Phosphor Bronze	Brass	CBM BSPP 1/4"	0-60 bar / psi	Ambient 0-60°C	2.50%
PG63-120RG	Gly-filled	63mm	Polished s/s 304	Polycarbonate	Brass	Phosphor Bronze	Brass	CBM BSPP 1/4"	0-120 bar / psi	Ambient 0-60°C	2.50%
PG63-200RG	Gly-filled	63mm	Polished s/s 304	Polycarbonate	Brass	Phosphor Bronze	Brass	CBM BSPP 1/4"	0-200 bar / psi	Ambient 0-60°C	2.50%
PG63-250RG	Gly-filled	63mm	Polished s/s 304	Polycarbonate	Brass	Phosphor Bronze	Brass	CBM BSPP 1/4"	0-250 bar / psi	Ambient 0-60°C	2.50%
PG63-400RG	Gly-filled	63mm	Polished s/s 304	Polycarbonate	Brass	Phosphor Bronze	Brass	CBM BSPP 1/4"	0-400 bar / psi	Ambient 0-60°C	2.50%
PG63-600RG	Gly-filled	63mm	Polished s/s 304	Polycarbonate	Brass	Phosphor Bronze	Brass	CBM BSPP 1/4"	0-600 bar / psi	Ambient 0-60°C	2.50%